



North Carolina Department of Public Safety

Governor's Crime Commission

Roy Cooper, Governor
Eddie M. Buffaloe, Jr., Secretary

Robert A. Evans, Chairman
Caroline Farmer, Executive Director

Children's Justice Act Task Force Subcommittee Meeting

Virtual Meeting via WebEx

1201 Front Street

Raleigh, NC 27609

Thursday, November 4, 2021

1:00 P.M. – 3:00 P.M.

Attendees: Ms. Kiesha Crawford, Judge Donald Cureton, Jr., Ms. Lorrie Dollar, Ms. Jennifer Evans, Ms. Vicki Foster, Ms. Kella Hatcher, Ms. Deana Joy, Ms. Christy Malott, Mr. Victor Maynard, Mr. Matt McKay, Ms. Susan Robinson, Ms. Wendy Sotolongo, Ms. Kathy Stone

Non-Attendees: Ms. Whitney Belich, Dr. Molly Berkoff, Ms. Deborah Flowers, Ms. Rhonda Morris, Ms. Kelsey Mosley, Ms. Kristine Sullivan

GCC Staff: Diane Barber -Whitaker, Natalia Beckers, Caroline Farmer, Nickisha Livingston, Toni Lockley, Adonicca McAllister.

Presenters: Kimberly Friedman, J.D., and Ben Goodman, Ph.D. - Duke Center for Child and Family Policy

Call to Order: Chair Sotolongo called the meeting to order at 1:05 P.M.

Review and Approval of Minutes:

Chair Sotolongo called attention to the meeting minutes for July 8th, 2021. Kella Hatcher moved to approve the minutes; Kathy Stone seconded. The minutes were approved by the CJA Task Force Subcommittee.

Reminders:

Ethics: The General Statute, Chapter 138A-35, and other provisions of the State Government Ethics Act/Recusal

Chair Sotolongo welcomed and introduced the new Director of the State Guardian ad litem program, Lorrie Dollar. Ms. Dollar will be replacing Cindy Bizzell on the CJA Task Force.

Mailing Address:
4234 Mail Service Center
Raleigh, NC 27699-4234

www.ncdps.gov/gcc



An Equal Opportunity Employer

Office Location:
1201 Front Street
Raleigh, NC 27609
Phone: 919-733-4564
Fax: 919-733-4625



North Carolina Department of Public Safety

Governor's Crime Commission

Roy Cooper, Governor
Eddie M. Buffaloe, Jr., Secretary

Robert A. Evans, Chairman
Caroline Farmer, Executive Director

Introduction of GCC Executive Director:

Chair Sotolongo welcomed and introduced GCC's new Executive Director, Caroline Farmer, to the CJA Task Force members.

GCC Staff Updates:

Toni Lockley presented information on the following:

- CJA Funding Update – Review board requested further information on the Three-Year Assessment process. Federal Award was received on September 4th, 2021, and PROJ014830: Building Trauma-Informed Courts in North Carolina will open from 1/1/2022 to 12/31/2023.
- August COP Leadership Call: Federal Updates and Potential Topics/Formats for the coming year. The next leadership meeting is scheduled for November 5th, 2021.
- The September CJA Quarterly call was a joint call with the Children's Justice Act (CJA) grantees, State Liaison Officers (SLO) for Child Abuse and Neglect, Hotline Intake, and Screening Managers (HISM).

Refer to Attachment Number 4/GCC Staff Updates PowerPoint Presentation.

Chair Sotolongo requested the subcommittee receive an overview of PROJ014830: Building Trauma-Informed Courts in North Carolina at the next quarterly January 2022 meeting as many of the subcommittee members are involved in the court system and can share information with project personnel.

DSS Updates:

Kathy Stone, Section Chief, Safety & Prevention for NC DHHS

- Senate Bill 693: The legislation removes red tape in reuniting children with parents who are completing court-ordered services and accelerates the process for finding a permanent home for children when parental rights have been terminated by a judge. The legislation also leads DHHS to study the costs of starting a statewide hotline for child abuse and neglect reports. DHHS will present a report to the NC Legislature in September 2022.
- DSS is continuing to work with Juvenile Justice on all policies and procedures.
- Working on the development of the Child Welfare Transformation Intake Tool Assessment structure. Continuing focus for the next steps for the Family First Prevention Services Act (FFPSA) and Racial Equity Training beginning in December will take place at the departmental level.

Mailing Address:

4234 Mail Service Center
Raleigh, NC 27699-4234

www.ncdps.gov/gcc



An Equal Opportunity Employer

Office Location:

1201 Front Street
Raleigh, NC 27609
Phone: 919-733-4564
Fax: 919-733-4625



North Carolina Department of Public Safety

Governor's Crime Commission

Roy Cooper, Governor
Eddie M. Buffaloe, Jr., Secretary

Robert A. Evans, Chairman
Caroline Farmer, Executive Director

Presentation - Developing an Early Childhood System of Care:

- Dr. Ben Goodman from the Duke Center for Child and Family Policy presented information and results from the Durham Family Initiative – The Duke Endowment (TDE). This initiative began in 2001 when the Duke Endowment funded the 10-year Duke-Durham partnership.
- Director Kimberly Friedman for Family Connects presented information on the PDG Pilot Focused on Rural NC Communities. Smart Start and FCI are partnering to expand the Family Connects model to 8 NC counties. Services for the NC PDG Communities were launched in October 2021. The pilot focuses on Smart Start's community connections and Family Connects strength model. Family Connects has actively engaged statewide implementation and interest across the country.

Refer to Attachment Number 5/Developing an Early Childhood System of Care to Prevent Child Abuse and Neglect PowerPoint Presentation.

CJA Membership Update:

Adonicca McAllister shared a reminder that the position for a Civil Court Judge on the CJA Task Force is vacant.

Old Business: None

New Business:

The first-quarter meeting will be held on January 6th, 2022, and the second-quarter meeting will be held on April 14th, 2022.

Adjourn:

Chair Sotolongo adjourned the meeting at 2:44 P.M.

Meeting minutes were taken by Natalia Beckers

Attachments:

1. CJA Subcommittee Meeting Agenda
2. CJA Subcommittee Roll call for attendance
3. **CJA Subcommittee Meeting minutes from Thursday, July 8th, 2021.**
4. GCC CJA Staff Updates PowerPoint Presentation

Mailing Address:
4234 Mail Service Center
Raleigh, NC 27699-4234

www.ncdps.gov/gcc



An Equal Opportunity Employer

Office Location:
1201 Front Street
Raleigh, NC 27609
Phone: 919-733-4564
Fax: 919-733-4625



North Carolina Department of Public Safety

Governor's Crime Commission

Roy Cooper, Governor
Eddie M. Buffaloe, Jr., Secretary

Robert A. Evans, Chairman
Caroline Farmer, Executive Director

5. Developing an Early Childhood System of Care to Prevent Child Abuse and Neglect
PowerPoint Presentation.

Mailing Address:
4234 Mail Service Center
Raleigh, NC 27699-4234

www.ncdps.gov/gcc



An Equal Opportunity Employer

Office Location:
1201 Front Street
Raleigh, NC 27609
Phone: 919-733-4564
Fax: 919-733-4625



GCC Staff Updates

Children's Justice Act (CJA) Task Force Meeting

Toni E. Lockley

CJA Coordinator

October 7th, 2021



Caroline Farmer comes to GCC from *VolunteerNC*, the NC Commission on Volunteerism and Community Service. She received her undergraduate and law degree from the University of North Carolina.

She is very active in community volunteerism, professional organizations and has served on numerous boards and commissions during her career. Farmer is currently a board member for the NC Education Corps and Association of State Commissions.

Welcome to GCC, Caroline!

Staff Updates

- ▶ CJA Funding Update
- ▶ August COP Leadership Call
- ▶ September CJA Quarterly Call

CJA Funding Update

2021 CJA Solicitation Update

- ▶ Review board requested additional information and clarification on Three-Year Assessment process
- ▶ Received Federal award on September 4th, 2021
- ▶ **PROJ014830: Building Trauma-Informed Courts in North Carolina** will open 1/1/2022 – 12/31/2023

August COP Leadership Call

August COP Leadership Call

- ▶ Federal Update:
 - CJA Application Review
 - How COVID impacted task force engagement
 - Focus on racial equity in CW work
 - CJA partnering with Court Improvement Program

- ▶ Potential Topics/Formats for the Coming Year:
 - Quarterly meetings and how to keep them interesting
 - Discussed speakers, break-out rooms, Zoom fatigue
 - Information regarding what to present in the December meeting.

August COP Leadership Call

- ▶ Topics:
 - Discussed model for youth engagement in Texas between systems around topics of child welfare, juvenile Justice and homelessness
 - Consider reviewing child welfare system as a whole, to include CPS and other programs
- ▶ Round 4 of CFSR :
 - Would like meaningful and consistent voices of youth and looking at improving process of the front-end systems (CPS)
- ▶ Subject of how child welfare is handling cases involving marijuana and edibles. Many states are legalizing marijuana. CO probably has the most data regarding this.

Next leadership meeting scheduled for November 12th, 2021

September CJA Quarterly Call

September CJA Quarterly Call

- ▶ The call recording is available for viewing at:
<https://vimeo.com/606723706/2554135d5c>
- ▶ Joint call with Children's Justice Act (CJA) grantees, State Liaison Officers (SLO) for Child Abuse and Neglect, and Hotline, Intake and Screening Managers (HISM)
- ▶ **Child Welfare Virtual Expo** – September 23, 2021 (virtual)
- ▶ **The Honorable Aurora Martinez Jones**, 126th State District Court Judge in Travis County, Texas presented on **Mandatory Reporter Training with an Equity Lens**

Mandatory Reporter Training with an Equity Lens

- ▶ Legislative Changes to definition of “neglect” in the Texas Mandated Reporter Statute
- ▶ HB 567 amended Texas Family Code Section 261.001(4) Family Code
- ▶ FY 2020 top reporters to statewide intake were medical personnel, law enforcement, and school administration
- ▶ 392,718 children were reported as alleged victims
 - Overrepresentation of African-American children in the reports, investigation, and removal

Questions?

Developing an Early Childhood System of Care to Prevent Child Abuse and Neglect

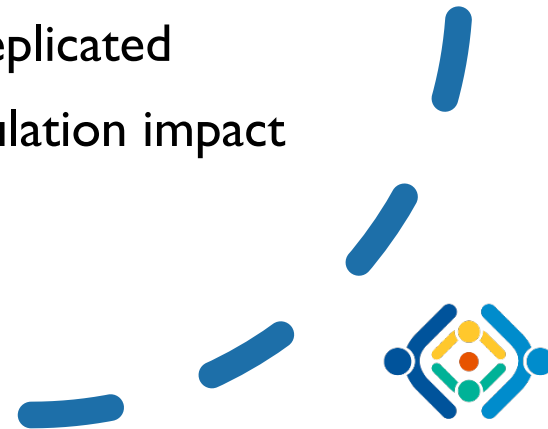
W. Benjamin Goodman, PhD

Kimberly Friedman, JD

Duke University

The Durham Family Initiative

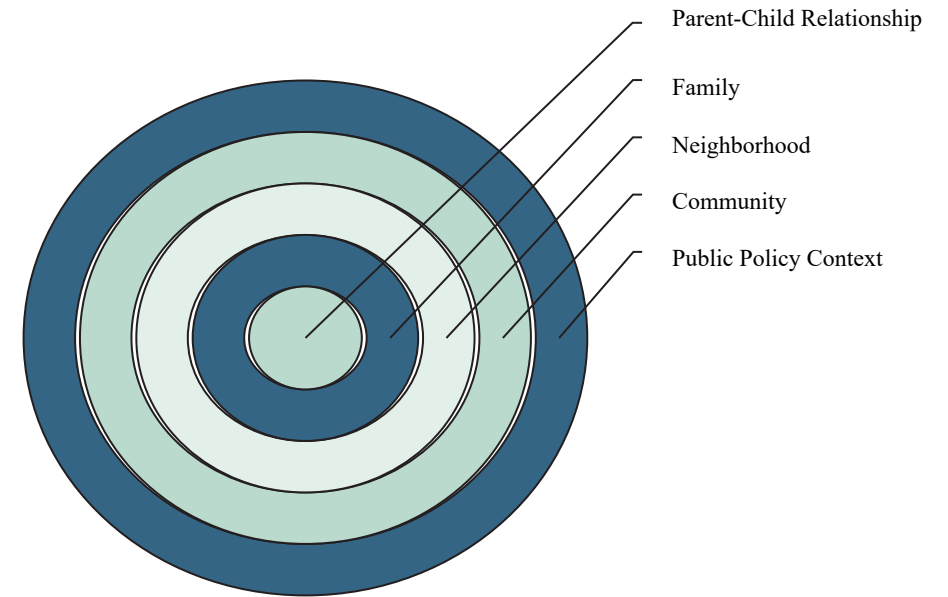
- 2000 – The Duke Endowment (TDE) sought solution to child maltreatment problem in Durham County
 - County rate higher than state and national rates
 - Desire to reduce *population rates* of maltreatment
- 2001 – TDE agrees to fund 10-year Duke-Durham partnership
 - Work grounded in developmental science
 - Manualized program that could be replicated
 - Ongoing, rigorous evaluation of population impact



Durham Family Initiative: Theoretical Model

Child abuse is a breakdown of the parent-child relationship that occurs when:

1. Family functioning is unhealthy
2. Local community support is lacking
3. Broader health care and legal systems do not adequately support families



Durham Family Initiative: The Early Years

1. Convened community leaders to promote emphasis on collective impact

- Promoting community co-ownership (e.g., “Wednesday Breakfast Club”)
- Commitment to aligning community services and resources

2. Initiated multiple pilot projects increasing services for families

- Long-term home visiting (individual)
- Parent-child interaction therapy (family)
- Increasing social capital in high-risk neighborhoods (neighborhood)
- Police training to screen for child risk factors during house calls (community)



Durham Family Initiative: The Early Years

3. Studies of family processes linked to maltreatment risk

- Project MOM

- 500 pregnant women followed prenatal – child age 3 years
- Identified 4 domains of risk:
 - Healthcare
 - Family Safety & Resources
 - Parenting / Childcare
 - Parent Well-Being

- Individual “case studies” of maltreatment

- Importance of “connectedness” and lack of support as a common link for maltreatment



Process Model for Preventing Maltreatment

Connect with families to identify needs for support:

1. Health Care
2. Parenting & Child Care
3. Family Safety & Resources
4. Parent Well-Being

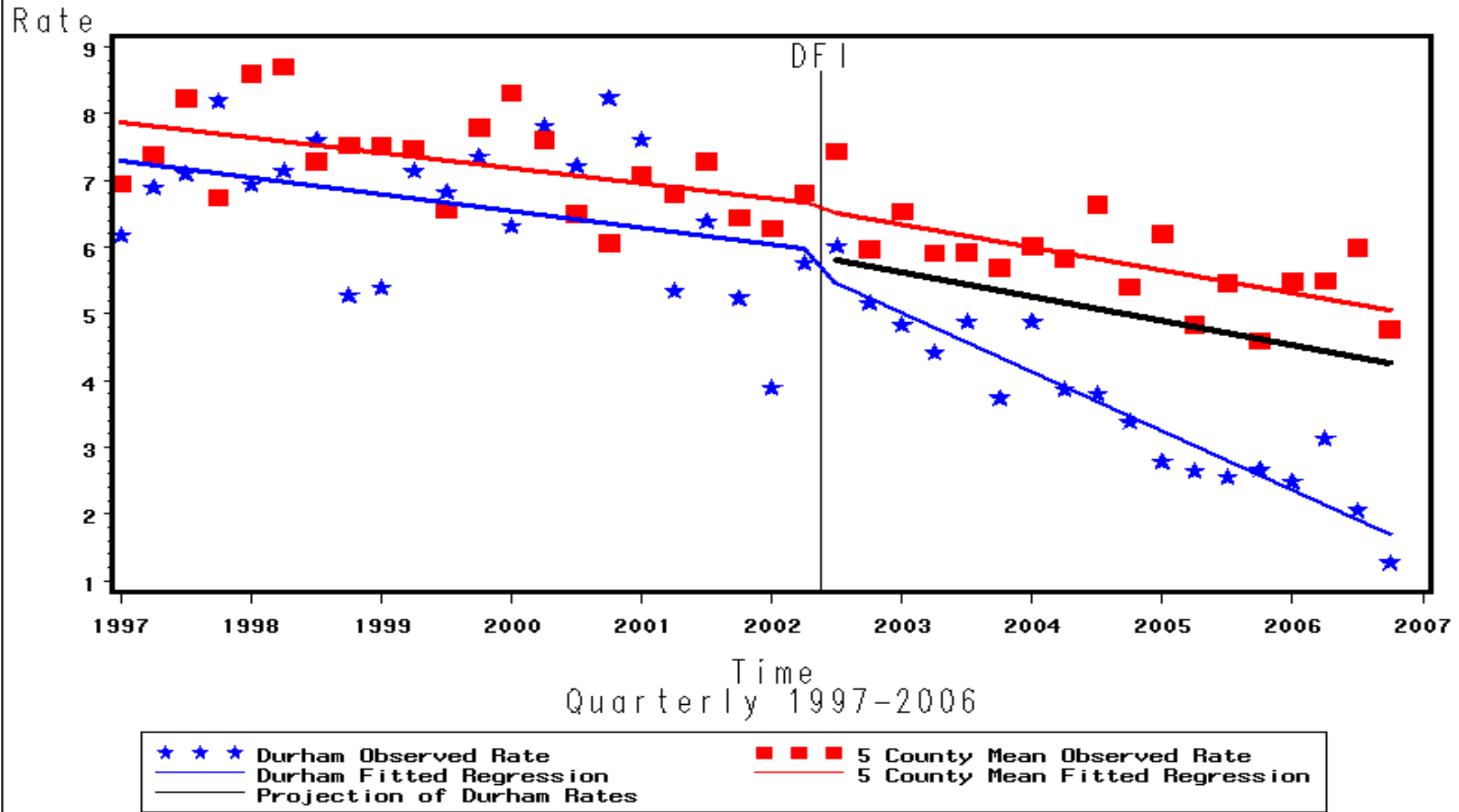
Connect families to matched community resources and services as needed and desired

Parents can better connect with their child to promote child health and well-being



'Substantiation Rates Per 1000 Children Ages 0 to 6'

Quarterly Data data 1997 - 2006 for Durham vs. 5 Counties(mean)



*5 Comparison Counties: Cumberland, Guilford, New Hanover, Pitt, Robeson

DFI Early Years: Findings & Conclusions

I. Durham's maltreatment rate decreased by 45% from 2002 – 2007

- Rate of decrease significantly greater than comparison counties
- Estimated 468 maltreatment cases prevented; \$31,000,000 saved

II. Challenges

- Lack of RCT limits conclusions about DFI impact, specifically
- Lack of a cohesive, manualized program limits dissemination

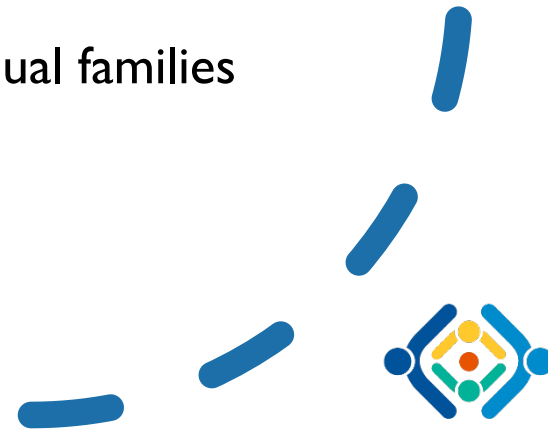
III. Conclusion

- Need a better-defined program and a more rigorous evaluation



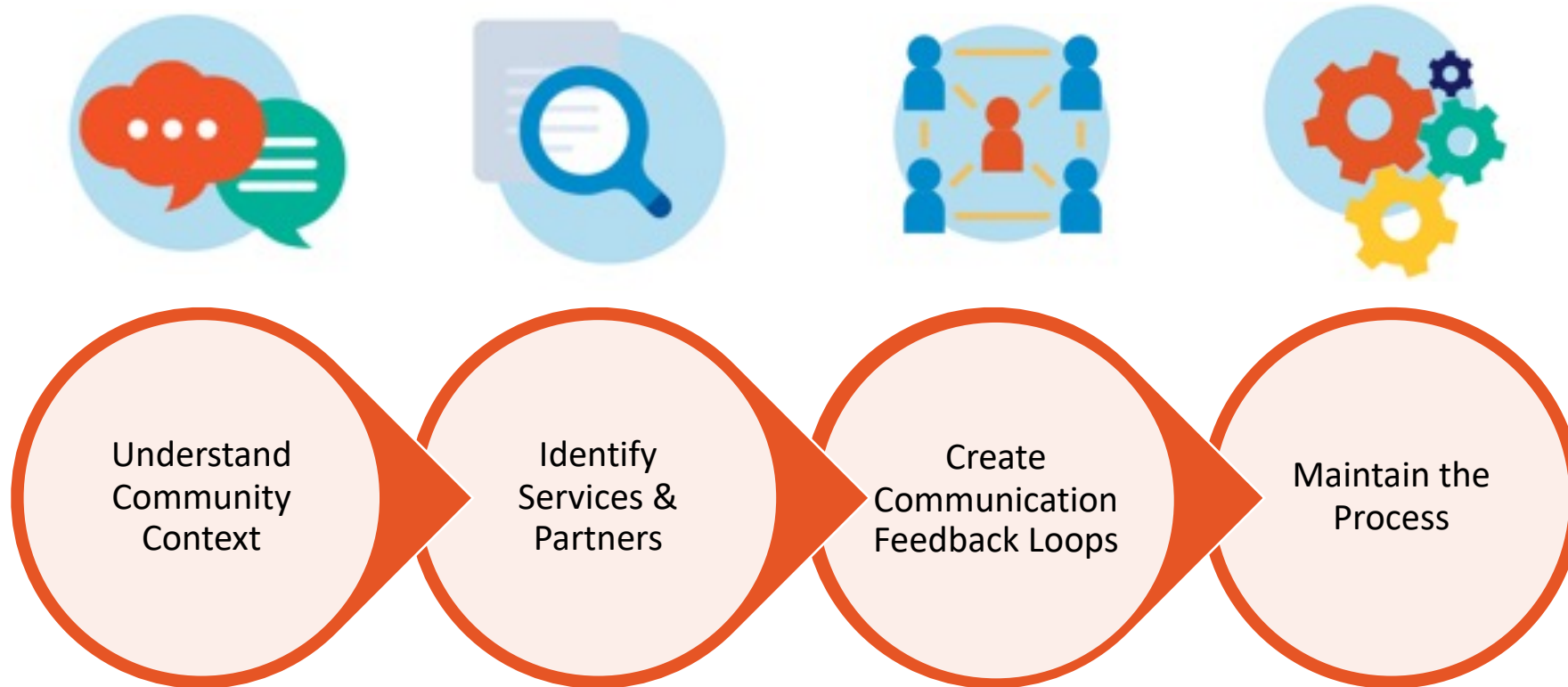
DFI Part II: Family Connects

- Family Connects (originally Durham Connects) developed based on lessons learned in DFI's first 5 years:
 - Single program design
 - Community-wide in reach
 - Guided by process model
 - Capable of being evaluated through an RCT
- Program supports early childhood system of care by combining:
 - "Top-down" approach of identifying and aligning community services and resources
 - "Bottom-up" approach of engaging individual families through postpartum nurse home visiting.



Family Connects Community Alignment

- Community Alignment is an iterative, ongoing process.
- Family Connects sites have dedicated staff to support this role.



Family Connects Home Visiting Protocol

- Recruitment & Visit Scheduling Shortly after Birth
- Comprehensive In-Home Visit (~2 hours)
 - Newborn & mother health assessments
 - Education about newborn care (e.g., safe sleep)
 - Assessment of family strengths & needs
 - 12 factors empirically-linked to child maltreatment risk
 - Referrals to matched community agencies for identified risk
- 2nd or 3rd visits made as needed to conduct additional assessment and assure community connections
- Follow-up phone call 4 wks. after case closure to assess satisfaction and community connection outcomes



Family Connects Family Needs Assessment

Support for Health Care

1. Maternal Health
2. Infant Health
3. Health Care Plans

Support for Caring for Infant

4. Child Care Plans
5. Parent-Child Relationship
6. Management of Infant Crying

Support for a Safe Home

7. Household Safety / Material Support
8. Family and Community Safety
9. History with Parenting Difficulties

Support for Parent(s)

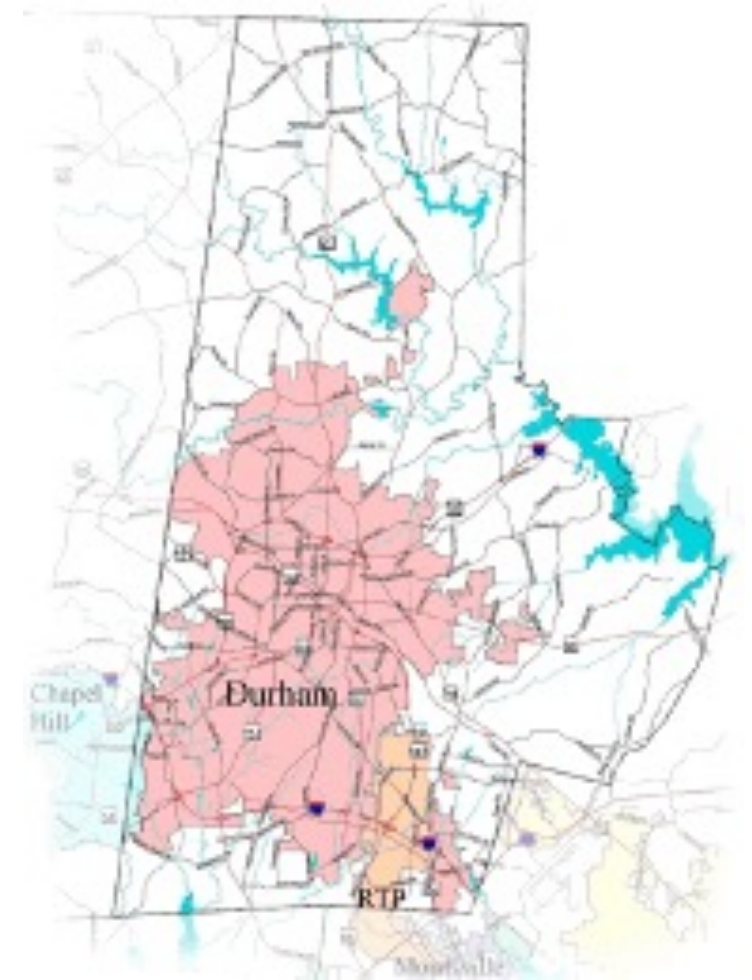
10. Parent Well-Being
11. Substance Abuse
12. Parent Emotional Support



Family Connects Randomized Clinical Trial

Family Connects RCT in Durham, NC

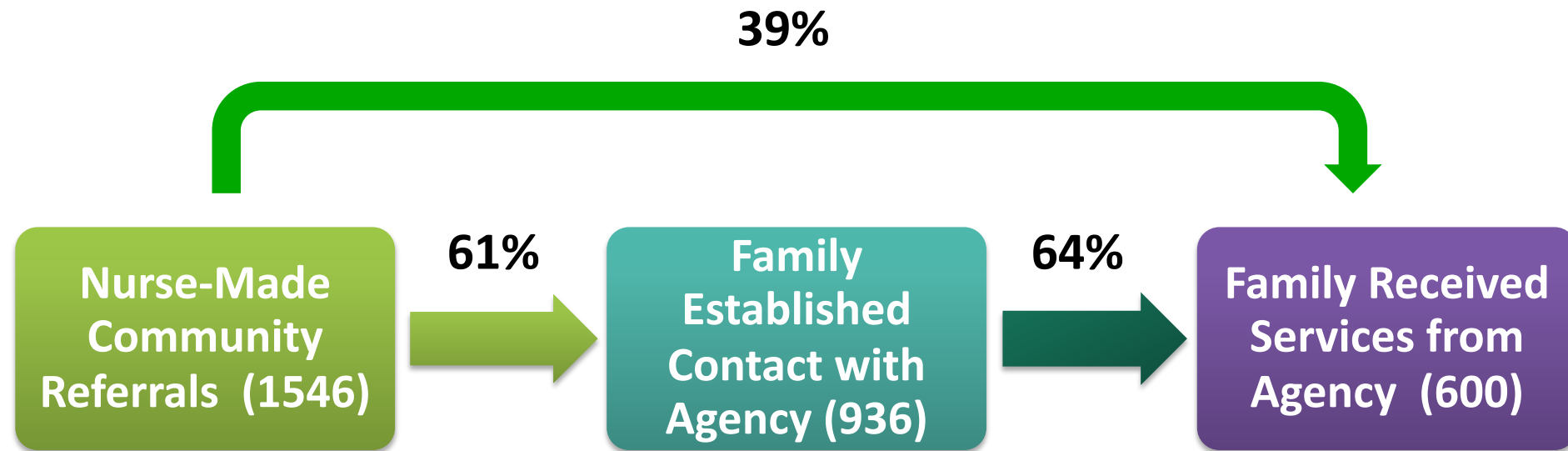
- 18-Month enrollment period (July 2009 - December 2010)
- All 4,777 resident Durham County births included
 - Even Birth Date Families Eligible ($n = 2,327$)
 - Odd Birth Date Families Received Services as Usual ($n = 2,450$)



Family Connects RCT: Implementation Results



Family Connects RCT: Community Connections

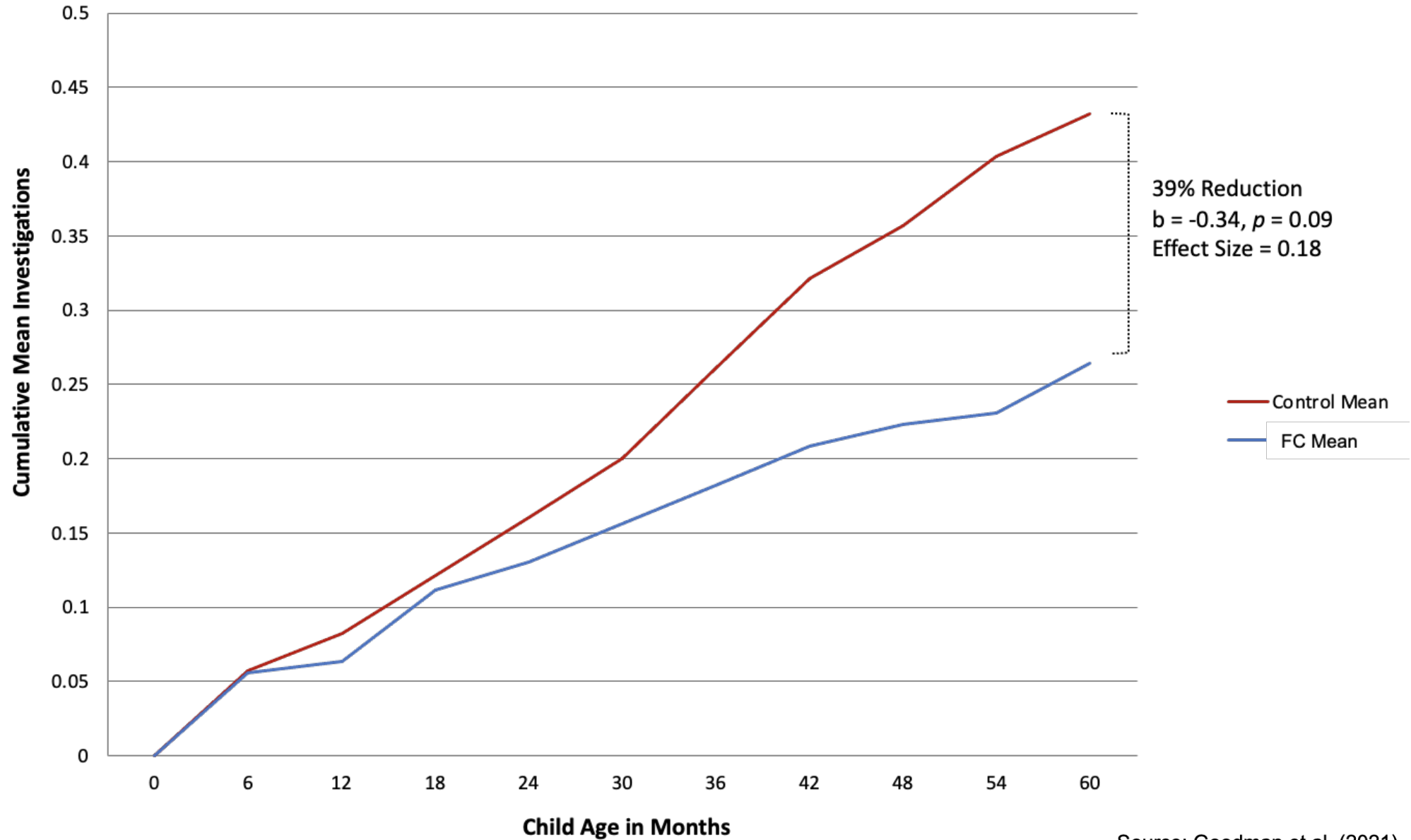


N = 1119 Families
79% Response Rate

65% of All Families Received 1+ Referrals

DSS Child Protective Services Investigations for Suspected Maltreatment

Cumulative Mean: Birth-60 Months



Family Connects Conclusions & Next Steps

- Results show the model can be implemented with high quality and positive impact
 - Model also evaluated in a 2nd Durham RCT and a field trial
- Recognitions:
 - “Evidence-based early childhood home visiting model” by Department of Health and Human Services
 - “Best Practice” by the Association and Maternal & Child Health Programs
- Family Connects International was established in 2016 to support model dissemination to other communities
- Exploring innovations to expand system of care work to other time points in the prenatal – age 5 continuum.



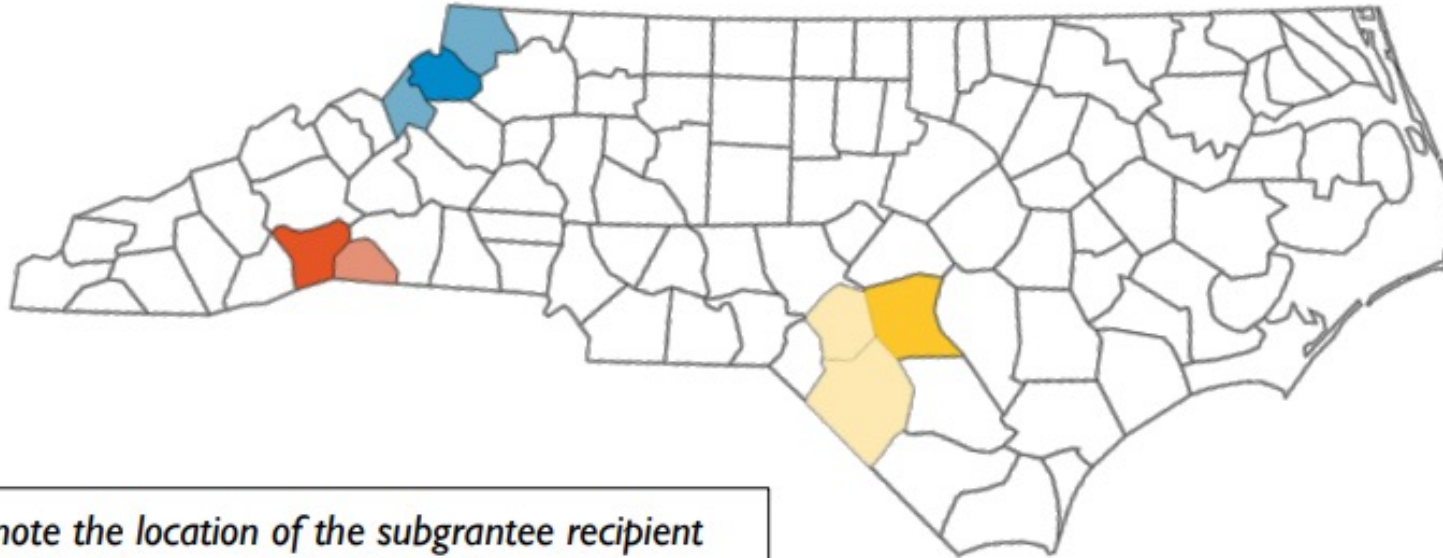
PDG Pilot Focused on Rural NC Communities

- Smart Start and FCI have partnered to expand the Family Connects model to 8 NC counties, with a goal of serving 9,900 families over 3 years
- This pilot leverages Smart Start's deep community connections and builds on the strength of the Family Connects model.
- Services launched in all PDG communities as of October!



NC PDG Communities

- Ashe, Avery and Watauga led by The Children's Council of Watauga County
- Cumberland, Hoke and Robeson led by the Partnership for Children of Cumberland County
- Henderson and Polk led by the Smart Start Partnership for Children



Dark colors denote the location of the subgrantee recipient that covers the adjacent counties in a lighter shade

PDG Advances NC Priorities

- Using Federal funding to advance the state's Early Childhood Action Plan goals
- Maximizing current investments in infrastructure through Smart Start Local Partnerships,
- Advancing local community engagement with the NCCARE 360 resource and referral tool.
- Supporting both alignment of and access to a local early childhood system of care in rural communities, including making connections that align with family needs and preferences

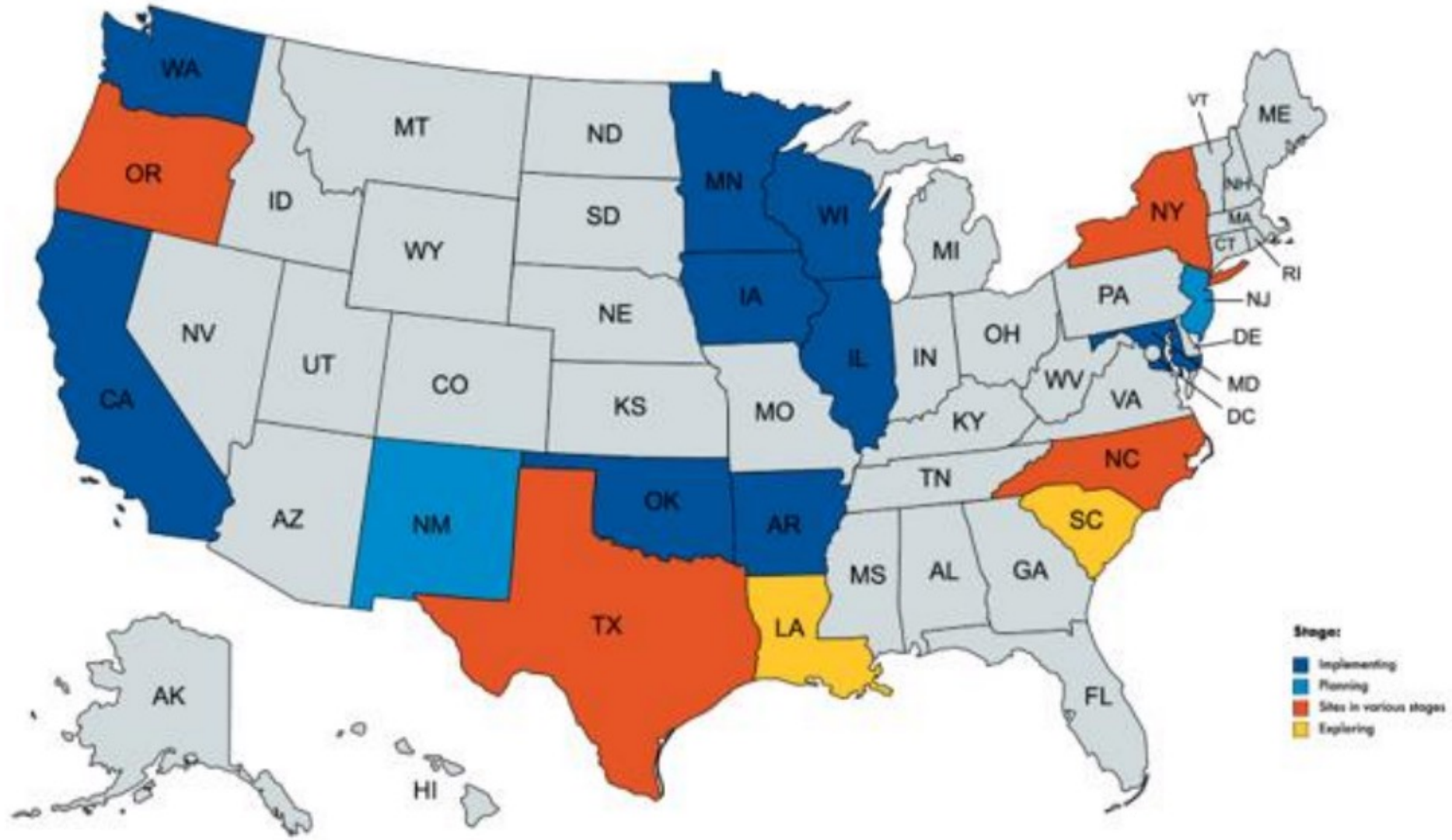


Additional NC Family Connects Communities

Durham, Guilford, and Transylvania Counties have active Family Connects programs.

Wake and Forsyth Counties are exploring opportunities for the FC model.





Questions?

For additional information:

Ben Goodman: ben.goodman@duke.edu

Kim Friedman: kimberly.friedman@duke.edu

<https://www.familyconnects.org/>